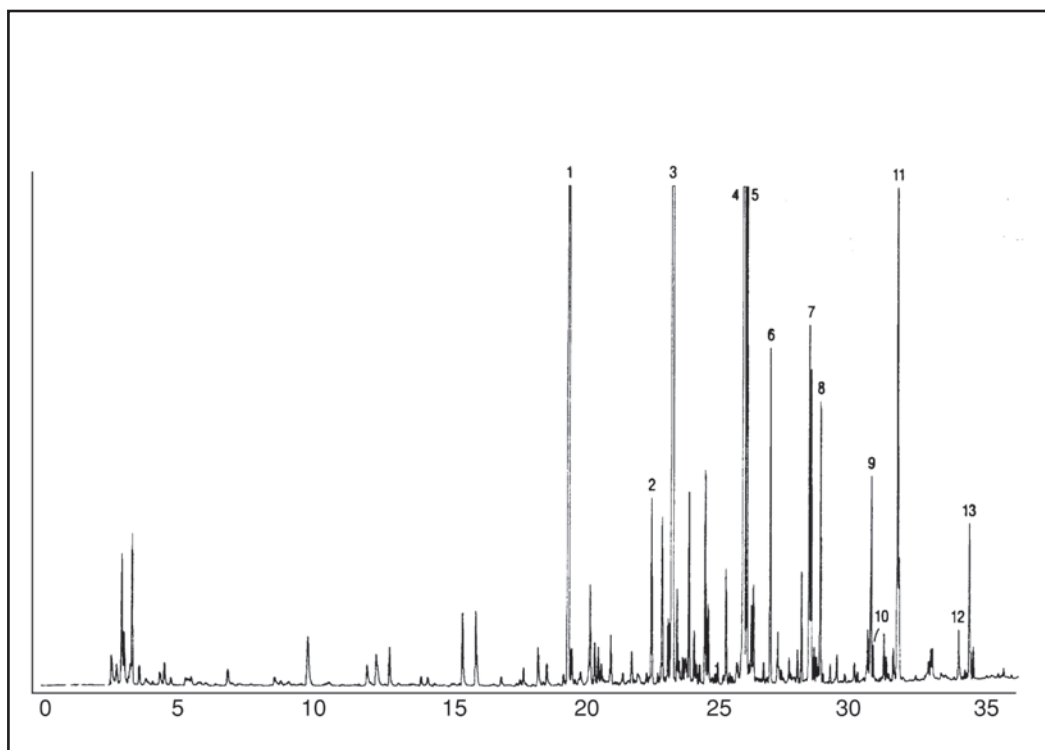


GC CAPILLARY COLUMN APPLICATIONS: FAMES

PUFA 1 Marine Source

COLUMN: 007-23, Bonded
Cyanopropyl
Polysiloxane
50M. x 0.25mm I.D. x
0.25µm film
Cat. No.: 007-23-50-0.25F
Temperature: 60° (5°/min.) - 260°C
Injector: 230°C
Detector: 300°C, FID
Carrier Gas: 28 cm/sec., Helium

1. C-14:0
2. C-16:0
3. C-16:1 w7
4. C-18:1 w9
5. C-18:1 w7
6. C-18:2 w6
7. C-20:1 w9
8. C-18:4 w3
9. C-22:1 w11
10. C-22:1 w9
11. C-20:5 w3
12. C-22:5 w3
13. C-22:6 w3



PO Box 3881, Woodbridge, CT 06525 • (203) 393-3112 • FAX (203) 393-0391
TOLLFREE: 800-275-7033 • E-MAIL: tech@quadrexcorp.com