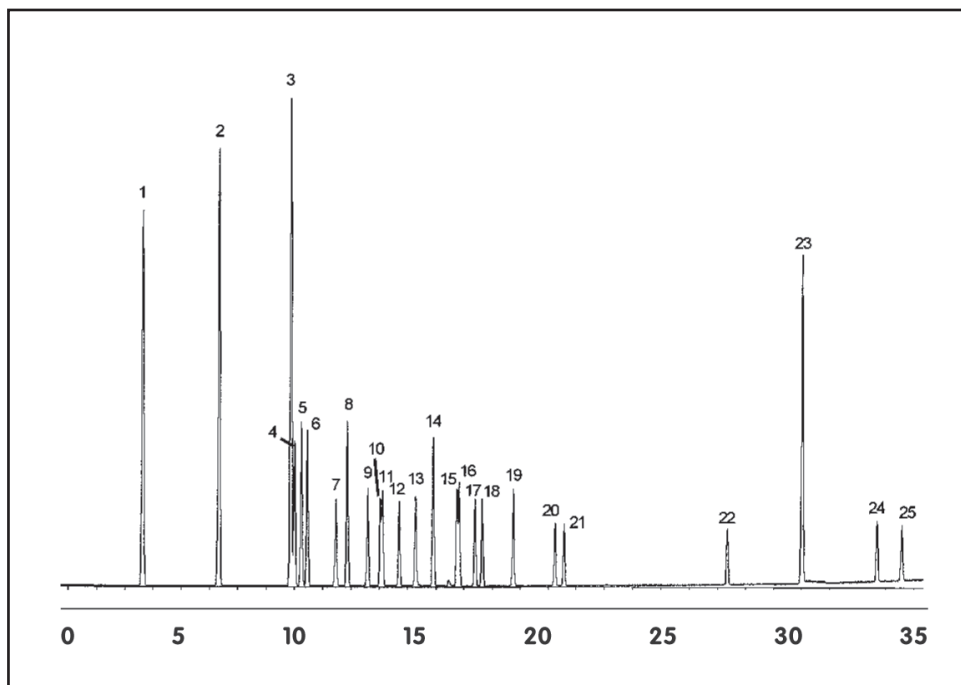


GC CAPILLARY COLUMN APPLICATIONS: PETROCHEMICAL

Aromatics in RF Gasoline

COLUMN: 007-CW, Bonded
Carbowax
30M. x 0.25mm I.D. x
1.0µm film
Cat. No.: 007-CW-30-1.0F
Temperature: 40° (2.0 min. hold)
(5°/min.) - 240°C
Injector: 220°C
Detector: MSD
Carrier Gas: 28 cm/sec, Helium

1. benzene & benzene d6
2. toluene
3. ethylbenzene d10
4. ethyl benzene
5. o-xylene
6. p-xylene
7. isopropylbenzene (cumene)
8. m-xylene
9. propylbenzene
10. 1-methyl-3-ethylbenzene
11. 1-methyl-2-ethylbenzene
12. 1,3,5-trimethylbenzene
13. 1-methyl-4-ethylbenzene
14. 1,2,4-trimethylbenzene
15. 1,4-diethylbenzene
16. butylbenzene
17. 1,2-diethylbenzene
18. 1,2,3-trimethylbenzene
19. indan
20. 1,2,4,5-tetramethylbenzene
21. 1,2,3,5-tetramethylbenzene
22. pentamethylbenzene
23. naphthalene & naphthalene d8
24. 2-methylnaphthalene
25. 1-methylnaphthalene



PO Box 3881, Woodbridge, CT 06525 • (203) 393-3112 • FAX (203) 393-0391
TOLLFREE: 800-275-7033 • E-MAIL: tech@quadrexcorp.com