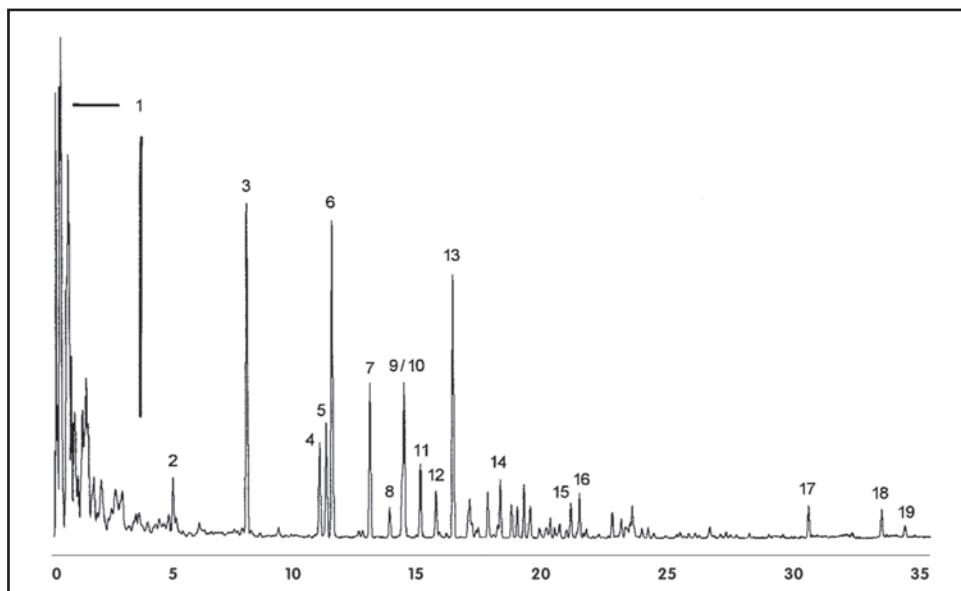


GC CAPILLARY COLUMN APPLICATIONS: PETROCHEMICAL

Reformulated (RF) Gasoline

COLUMN: 007-CW, Bonded
Carbowax
30M. x 0.25mm I.D. x
1.0µm film
Cat. No.: 007-CW-30-1.0F
Temperature: 40° (2.0 min. hold)
(5°/min.) - 240°C
Injector: 220°C
Detector: MSD
Carrier Gas: 28 cm/sec, Helium

1. aliphatic fraction
2. benzene
3. toluene
4. ethyl benzene
5. o-xylene
6. p-xylene
7. m-xylene
8. propyl benzene
9. 1-methyl-3-ethylbenzene
10. 1-methyl-2-ethylbenzene
11. 1,3,5-trimethylbenzene
12. 1-methyl-4-ethylbenzene
13. 1,2,4-trimethylbenzene
14. butylbenzene
15. 1,2,4,5-tetramethylbenzene
16. 1,2,3,5-tetramethylbenzene
17. naphthalene
18. 2-methylnaphthalene
19. 1-methylnaphthalene



PO Box 3881, Woodbridge, CT 06525 • (203) 393-3112 • FAX (203) 393-0391
TOLLFREE: 800-275-7033 • E-MAIL: tech@quadrexcorp.com