

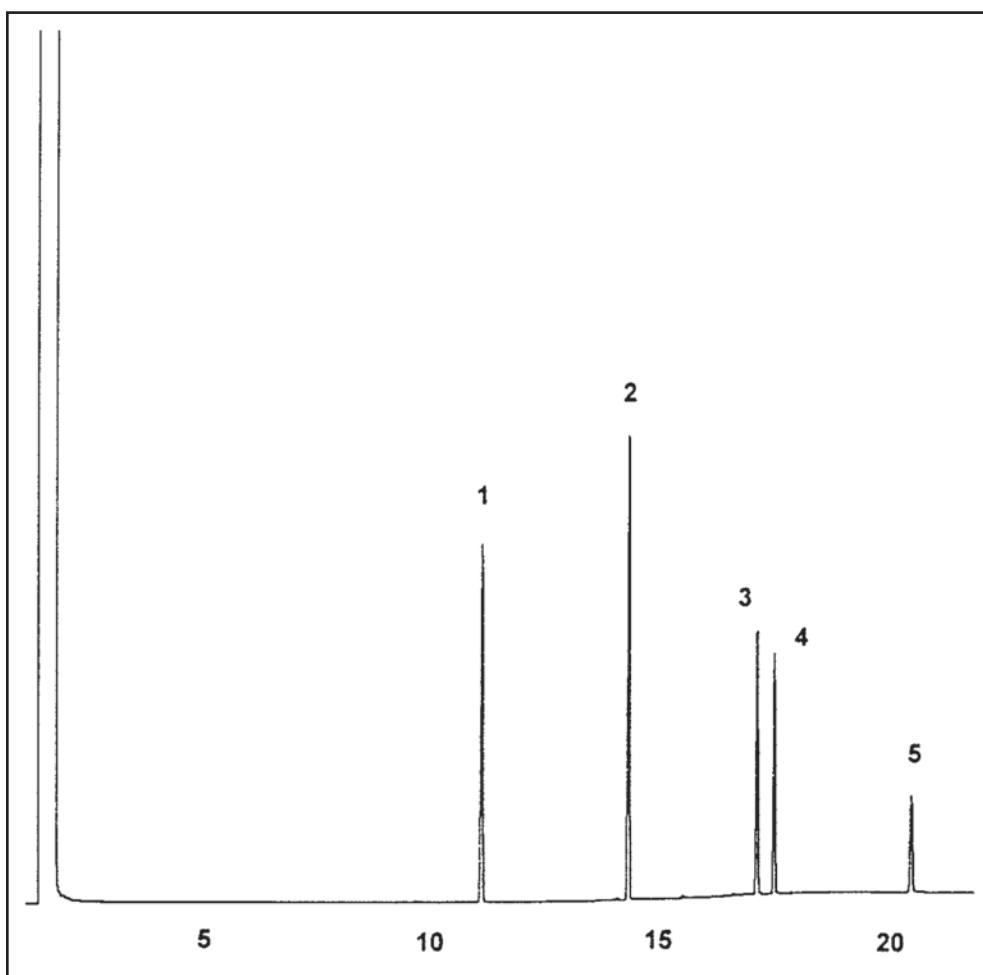
# GC CAPILLARY COLUMN APPLICATIONS: CLINICAL/TOXOLOGICAL

## QUIK CHEK™ Depressants

QUIK-CHEK is a trademark of  
Alltech Associates

COLUMN: 007-1301,  
6% Cyanopropyl  
Phenyl Methylpolysiloxane  
30M. x 0.25mm I.D. x  
0.5µm film  
Cat. No.: 007-1301-30-0.5F  
Temperature: 140° (8°/min.) - 300°C  
Injector: 225°C  
Detector: 310°C, FID  
Carrier Gas: 30 cm/sec., Helium

1. Glutethimide
2. Carbromal
3. Methaqualone
4. Chlorpromazine
5. Diazepan



PO Box 3881, Woodbridge, CT 06525 • (203) 393-3112 • FAX (203) 393-0391  
TOLLFREE: 800-275-7033 • E-MAIL: tech@quadrexcorp.com